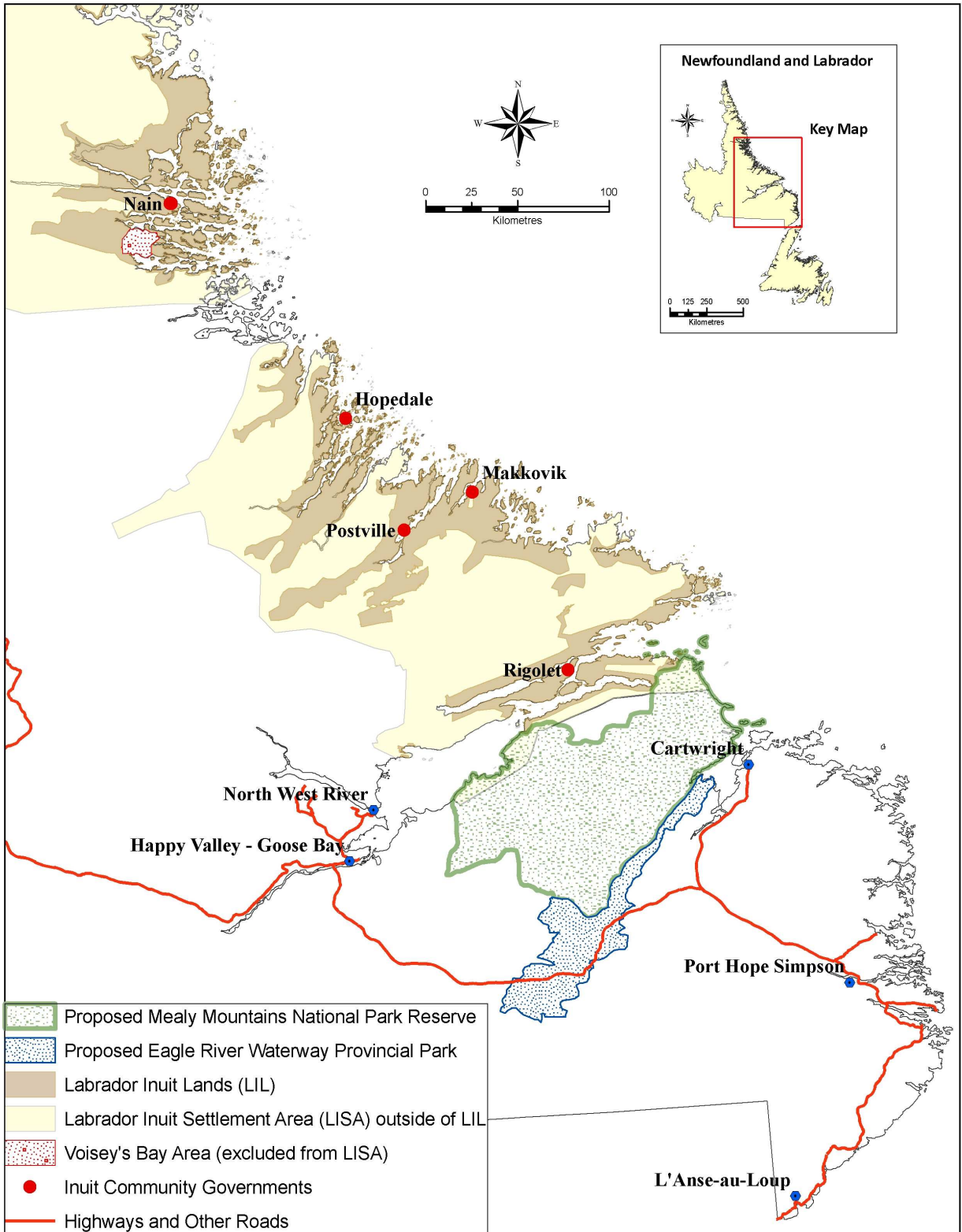


Plate 10- Proposed Mealy Mountains National Park Reserve



3.3 Physical Environment

LISA is the traditional land occupied by Inuit and used for hunting, trapping and fishing. There are eight primary ecoregions within LISA as shown on Plate 11. Two, *Low Arctic Tundra* and *Arctic Alpine Tundra* are located within Torngat Mountains National Park and will be maintained in their natural state by Parks Canada. Within this area are the highest mountains in mainland Canada east of the Rockies. They are characterized with fiords and glaciers and are above the tree line. The Arctic Alpine ecoregion also extends south of the National Park.

In the other six ecoregions the climate is characterized by long cold winters, with warm short summers in the southern part of LISA. Ecologically the area is very sensitive due to thin soils, limited vegetation, and harsh climate. Permafrost is found as far south as Nain on the north facing slopes.

The six ecoregions are:

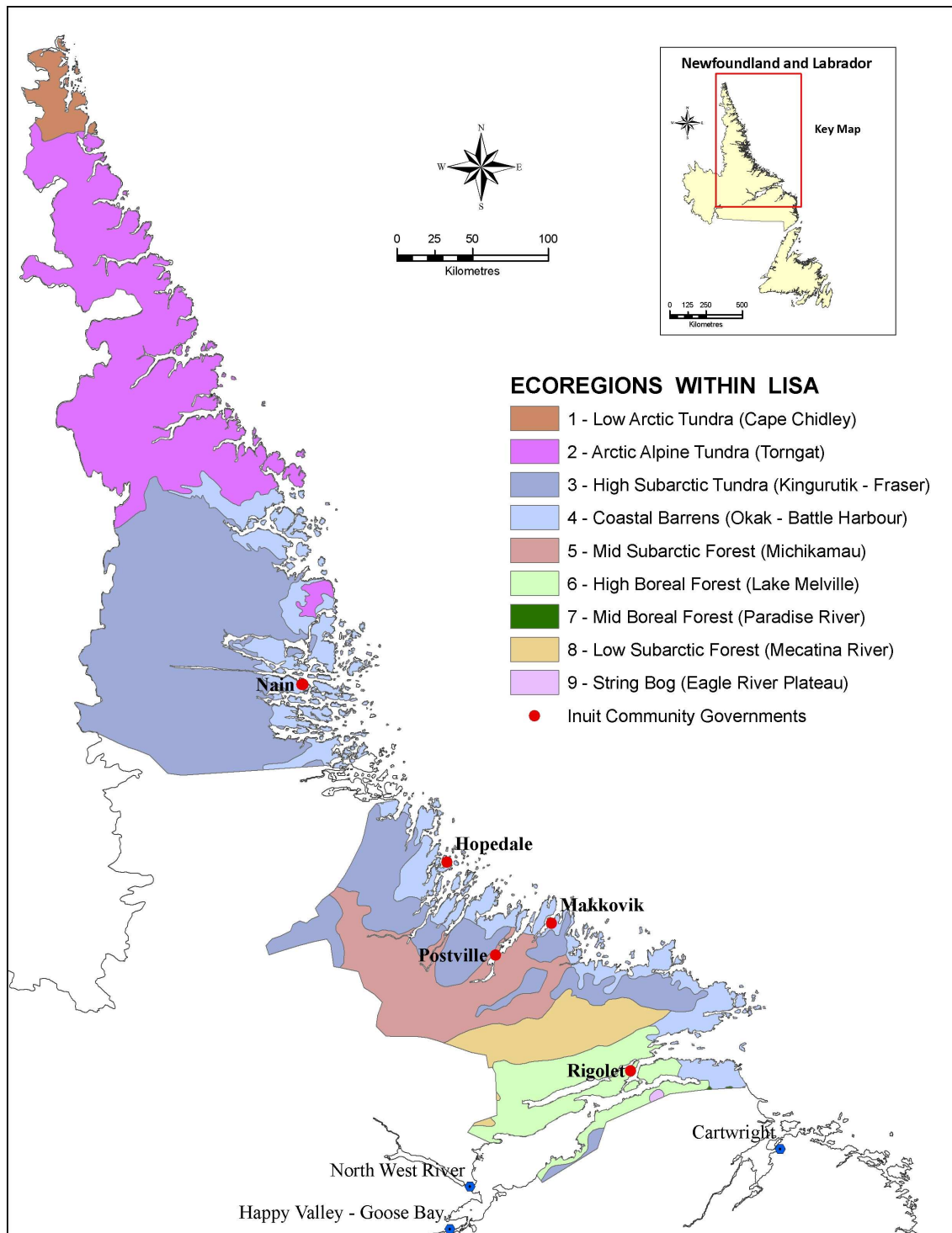
- *High Subarctic Tundra* is the ecosystem consisting of the George River Plateau with mountainous areas. The uplands are similar to Low Arctic Tundra with black spruce forests in the valleys
- *Coastal Barrens* ecoregion includes the coast south of Okak Bay. It is characterized by long sheltered inlets with spruce forests dominating the valleys with dwarf shrub barrens on higher grounds. Plateau bogs with frozen peat and salt marshes are also found here.
- *Mid Subarctic Forest* ecoregion is found in the Postville area with the main species of trees being black and white spruce with extensive fen-string bogs
- *High Boreal Forest* ecoregion is found around Lake Melville. It has a mix of forests dominated by balsam fir, white birch and trembling aspen
- *Low Subarctic Forest* is found north of the High Boreal Forest ecoregion and consists of black spruce that has commercial value in the Postville area



- *String Bog* ecoregion is mainly to the south of LISA with only small portion found below Lake Melville. It is characterized by extensive string bogs

The Labrador or central mineral belt is not identified as an ecoregion but is significant because of rich mineral deposits. It is found in the Makkovik/Postville area and extends inland towards the Smallwood Reservoir.

Plate 11 - Ecoregions within LISA



Source: Newfoundland and Labrador Ecoregion Brochures produced by Protected Areas Association of Newfoundland and Labrador (PAA) and Department of Environment and Conservation, Parks and Natural Areas Division

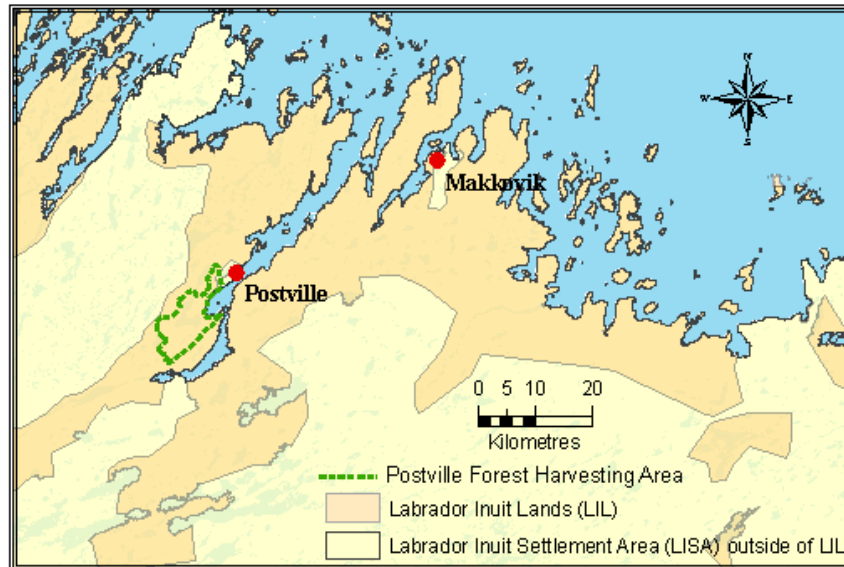
3.4 Resource Development

Resource development refers to the utilization of renewable and non-renewable resources.

3.4.1 Renewable Resources

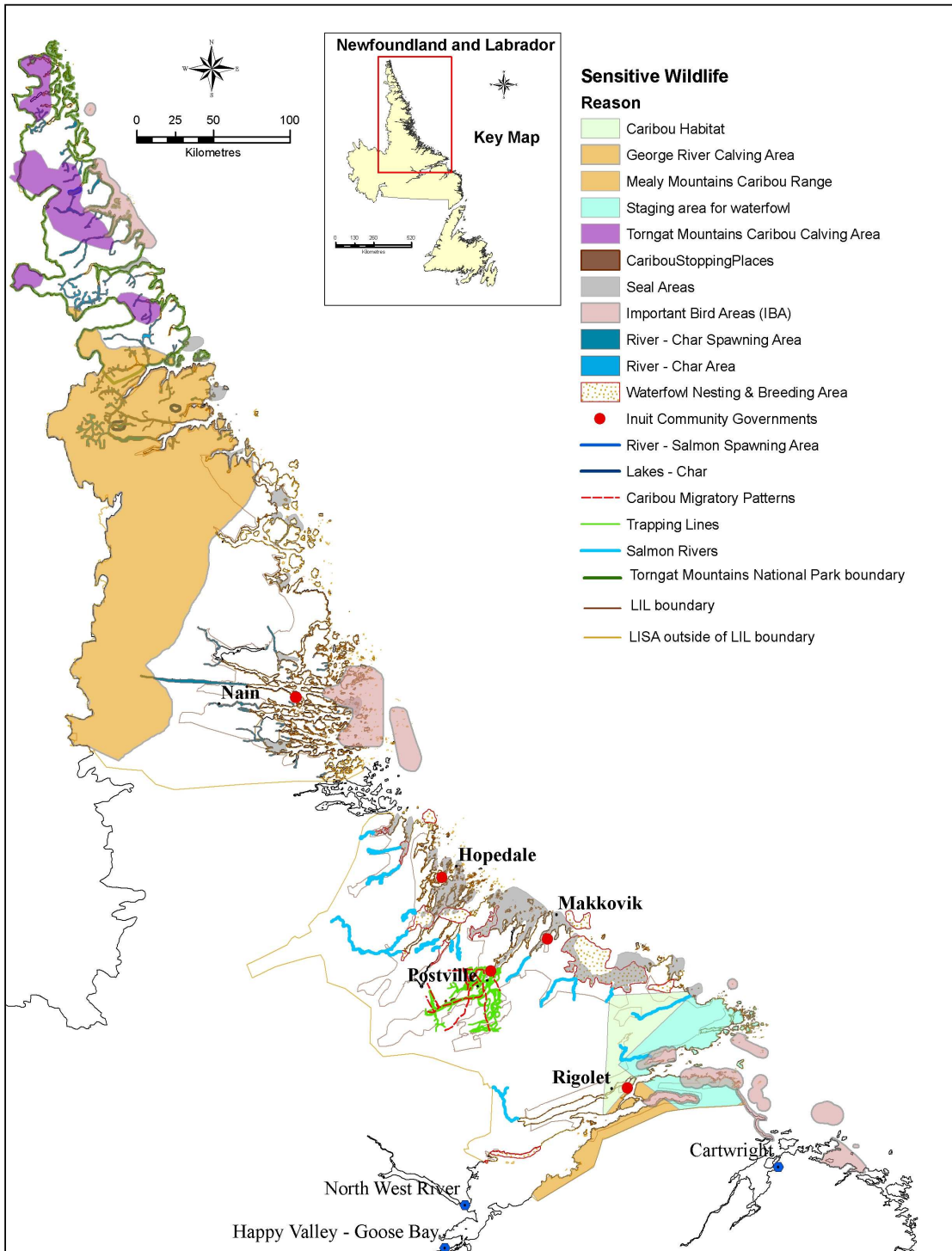
Forestry is important in the Postville Forest Management Plan Area. Plate 12 shows generally the proposed forest harvesting area adjacent to Postville within Forest Management District 23 during the next five years. There are significant stands of merchantable timber which is processed by the sawmill operated by the Labrador Inuit Development Corporation in Postville. Throughout LISA forested areas also provide wood for domestic use, and building materials for traditional uses.

Plate 12 - Postville Proposed Forestry Harvesting Area



Wildlife is an important renewable resource, not only for local residents as a valuable food source, but also for outfitters who provide opportunities for sportspeople to hunt caribou, ducks, geese and small game and fish for trout and salmon. Changing climate and habitat have seen moose moving into the area resulting in another species of big game that can be hunted. Plate 13 shows the sensitive wildlife features in LISA used in the preparation of this Plan. During and after the public consultations additional information was provided and the sensitive areas were adjusted to reflect this information.

Plate 13– Sensitive Wildlife Areas



Sources: Dept. of Environment and Conservation; Canadian Wildlife Service; Bird Studies Canada; Our Footprints Are Everywhere: Inuit Land Use and Occupancy in Labrador, Labrador Inuit Association, 1977; and Community Consultations

Inuit communities rely on diesel generation for electrical power. Other alternatives are being considered. There is a desire within the communities to connect to the power grid. This, however, would be very expensive given the distances involved and the small population. In October 2008 an alternative energy study was announced that will look at the feasibility of using solar, wind and hydroelectric generation. There are rivers within LISA that could be developed for hydroelectric power.

3.4.2 Non-Renewable Resources

Development of non-renewable mineral resources and quarrying within LISA have great economic potential. Quarrying provides construction material for infrastructure and buildings. Labradorite anorthosite quarried near Nain is used for jewellery, ornaments, decorative tiles and as a building material. Carving stone is gathered and quarried throughout LISA and used by Inuit carvers.

Part of LISA is within the Labrador Central Mineral Belt which consists of volcanic, plutonic and sedimentary rocks. The Central Mineral Belt and Mineral Occurrences are shown on Plate 14. There are significant deposits of minerals, elements including uranium, nickel and copper, and other rare and precious metals in LISA. There are known uranium reserves in the Postville-Makkovik area.